

Presenting a Company





课堂外

1. 蓝墨云班课



2. 喜马拉雅APP



视听
预习

自主学习
学生中心
翻转课堂

听说
预习

观看**微课**等在线学习资源



收听**音频** 跟读预习





Approaching Workplace

Task 1

Work in pairs. Talk about the following logos and put them into proper categories in the table below.



PORSCHE



TOYOTA



Back



Approaching Workplace

Task 1

CATEGORIES	BRANDS
Automobiles	Land Rover, Porsche, Toyota
Computers	Dell, Sony, Apple
Food	Häagen-Dazs, Pizza-Hut, Wall's
Clothing	Levi's, Calvin Klein, Adidas

Back



Task 2

Now discuss the questions below and then report to your class.

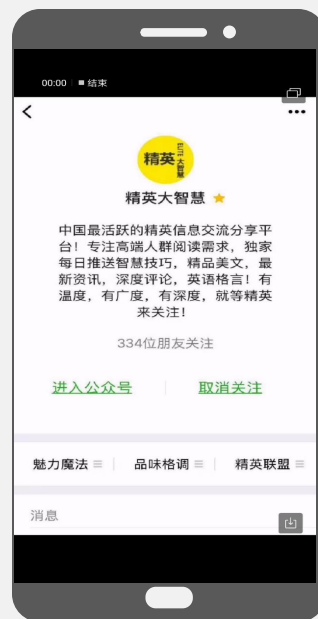
1. Which brands are you familiar with?
2. Which countries do you know they are from?
3. What products do these brands represent?
4. What is your favorite brand? Why?
5. Who are the owners of these brands?

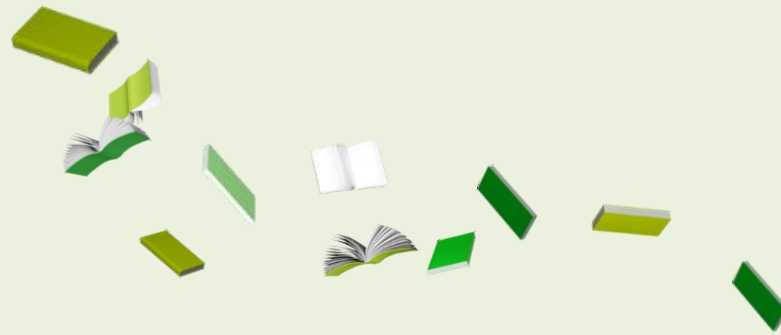


课后拓展，翻转课堂

1. 教师个人公众号：阅读案例

2. 蓝墨云班课：为下节作预习





Thank You!