

# Business Travel





课堂外

## 1. 蓝墨云班课



## 2. 喜马拉雅APP



视听  
预习

自主学习  
学生中心  
翻转课堂

听说  
预习

观看**微课**等在线学习资源



收听**音频** 跟读预习



# Approaching Workplace

## Task 1

Work in pairs. Talk about the following pictures and tell what you know about them.



Burj Al Arab Hotel



Airbus A380



Shanghai Maglev



Palazzo Coach

[Back](#)



# Approaching Workplace

## Task 1



**The hotel *Burj Al Arab* (迪拜帆船酒店)** is the only seven-star and most luxurious hotel in the world. It began to construct in 1994, and completed and opened to the public in 1999. The hotel is built on a man-made island on the beach. It is a sail-shaped tower building with 56 floors, 321 meters high, designed by a famous British designer.

# Approaching Workplace

## Task 1



**The Airbus A380** is a double-deck, wide-body, four-engine jet airliner. It is the world's largest passenger airliner which can seat 853 passengers. The A380 made its first flight on 27th April 2005 and began commercial service in October 2007 with Singapore Airlines.

[Back](#)

# Approaching Workplace

## Task 1



**Shanghai Maglev** tops in the list of the world fastest trains with its maximum operational speed of 430km/h. The Maglev started commercial operations in April 2004. It runs on the Shanghai Maglev Line, which is the first commercially operated high-speed magnetic levitation line, extending from Longyang Road Station of Metro Line 2 and ending at Shanghai Pudong International Airport.

Back

# Approaching Workplace

## Task 1



This most luxurious, modernized motor-coach named **eleMMent Palazzo** was made by an Austrian company Marchi Mobile. It comes with a convenient lift ladder entry, a living room, a master bedroom, a kitchen and two bathrooms, making it the most expensive motor-home on wheels! It sells at the price of \$1.9 million pounds or \$2.9 million.

[Back](#)



## Task 2

**Now discuss the questions below and then report to your class.**

1. Have you ever experienced a long-distance travel?

**Free answers.**

2. What should we do first if we make a business travel?

**We should make a travel plan first.**

3. When we have decided on our travel plan, what should we do next?

**We should book the air ticket or train ticket and make an appointment with customers or business partners we are going to visit.**





## Task 2

4. How do we choose our transportation means, by plane, by train or by coach?

**For a longer-distance travel we choose the plane or train.**

**For a short-distance travel we may take a coach.**

5. How do we visit our customers or business partners on a business travel?

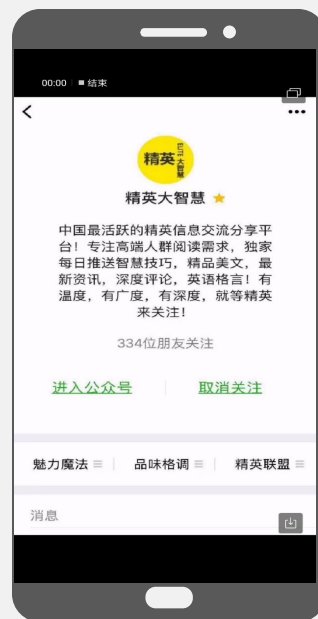
**We visit them by appointment. Normally we visit them in their company or invite them to the hotel where we stay, or we can meet them at the conference or in other activities.**

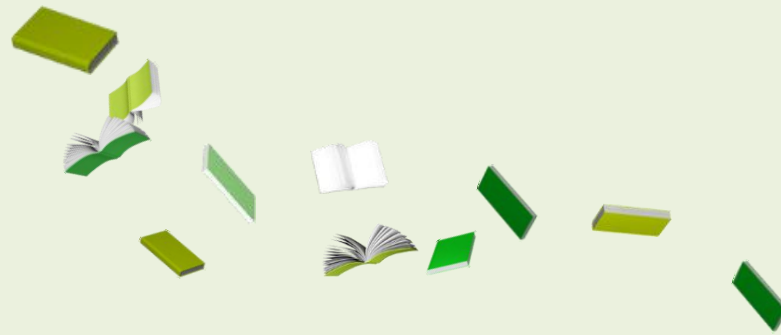


# 课后拓展，翻转课堂

1. 教师个人公众号：阅读案例

2. 蓝墨云班课：为下节作预习





**Thank You!**